

MAR 20, 2017



Are you an experienced, reliable and dedicated driver? We want you to become a member of our fleet. Apply now and enjoy more miles, bigger money and better benefits. our dedicated team will give you the attention and respect you deserve.

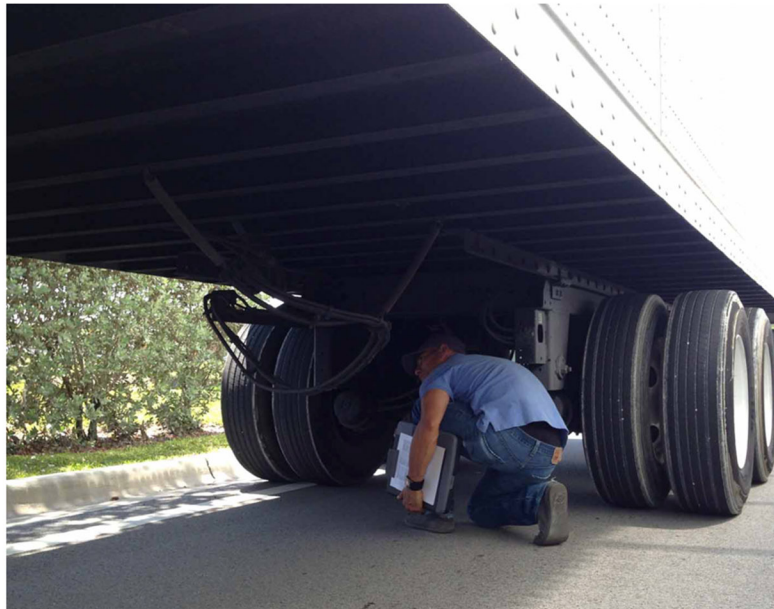
[Apply here!](#)



## INTERNATIONAL ROADCHECK 2017



Each year the commercial vehicle safety Alliance conducts a 72 hour event, it is the largest targeted enforcement program on commercial motor vehicles in the world and their goal is to inspect as many trucks and busses as possible.



During this 3 day event inspectors conduct these inspections to check for compliance however each year the road check has a special emphasis on a certain category. This year the event will take place June 6th to June 8th.

Inspectors will be conducting primarily Level I inspections. It includes examination of both driver and vehicle.

Last year 62,796 inspections were performed and it resulted in a 21.5% vehicle out of service rate and a 3.4% driver out of service rate.

If you have any questions about this subject, please contact the Safety Department at ext. 1304 or email us at [ssandri@nalogistics.com](mailto:ssandri@nalogistics.com).

**And remember..... Safety is not a choice is a must!**